

QUALITY

EXPERIENCE

PASSION



GRAIN TRANSPORTATION

SCREW CONVEYORS, CHAIN CONVEYORS AND BUCKET ELEVATORS

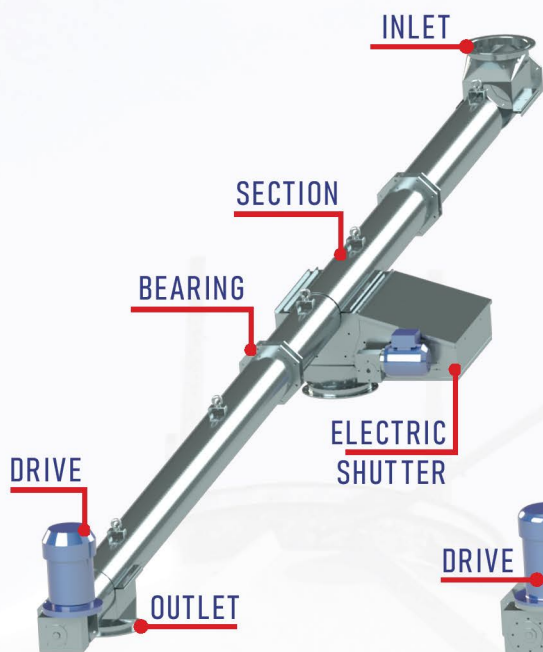


SCREW CONVEYORS

- Screw conveyors are designed for transporting cereal grain, maize, and oilseeds.
- They can receive bulk materials transported from feeding hoppers, unloading hoppers, containers, or conveyors and transport them to other containers or conveyors.
- They are particularly suitable for transporting grain from BIN silos and to BIN silos and moving it between the silos, as well as for carrying grain from the intake hopper to the bucket elevator.
- The screw conveyors have a modular structure.

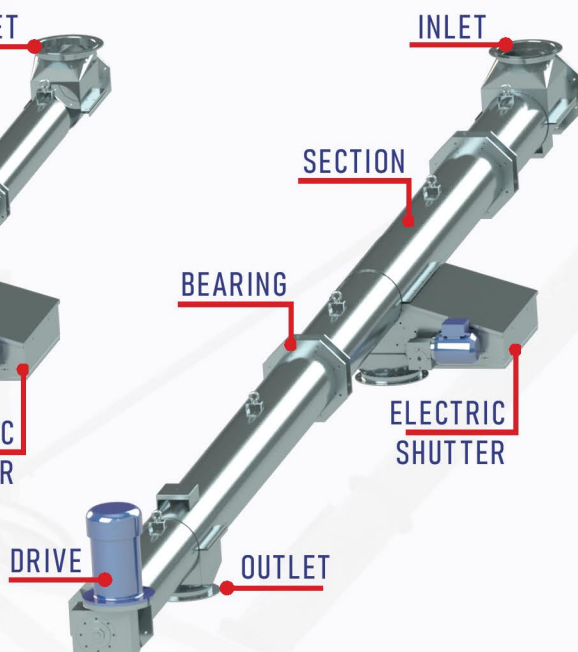
SCREW CONVEYORS PS160

Capacity 28t/h
Length up to 9m



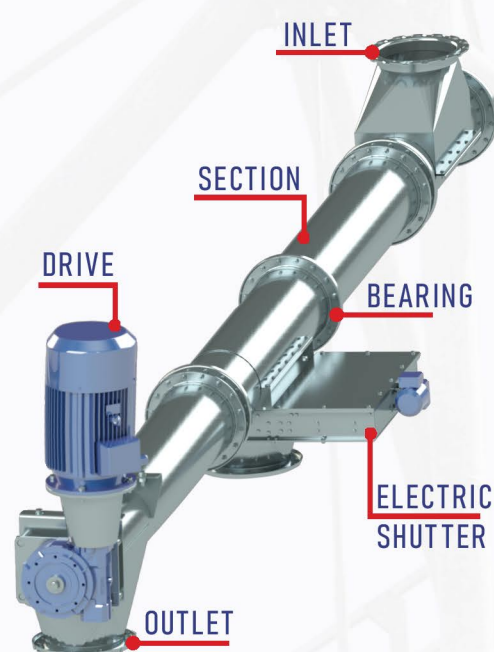
SCREW CONVEYORS PS220

Capacity 70t/h
Length up to 15m



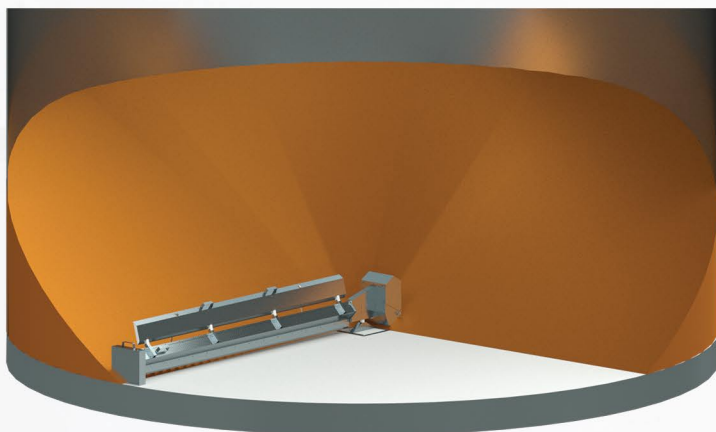
SCREW CONVEYORS PS300

Capacity 120t/h
Length up to 17m



INTERNAL SWEEP AUGER CONVEYORS

- Internal sweep auger conveyors enable residual grain unloading of the grain that was not able to fall gravitationally into conveyor mounted under the floor. Usually, in most of the silos, residual volume of the grain accounts for 15-20% of the silo's capacity.
- Sweep auger conveyors type PSW sweeps the grains while moving around the silo and transports them into underfloor conveyor.

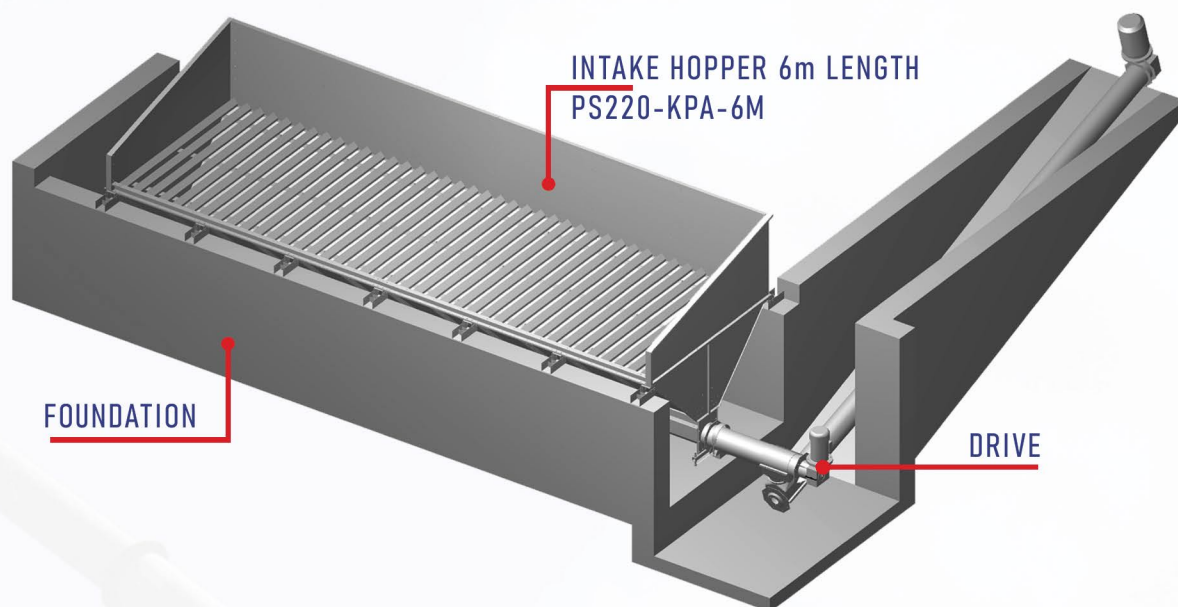


silo type	model of sweep auger type PSW
BIN60	PSW60
BIN100	PSW220-BIN100
BIN200	PSW220-BIN200
BIN500	PSW 500
BIN1000	PSW 1000
BIN1500	PSW 1500
FBIN9	PSW 500
FBIN11	PSW 1000 or PSW-F11-7.5 or PSW-F11-11.0
FBIN14	PSW 1500 or PSW-F14-7.5 or PSW-F14-11.0
FBIN17	PSW-F17-7.5 or PSW-F17-11.0
FBIN19	PSW-F19-7.5 or PSW-F19-11.0



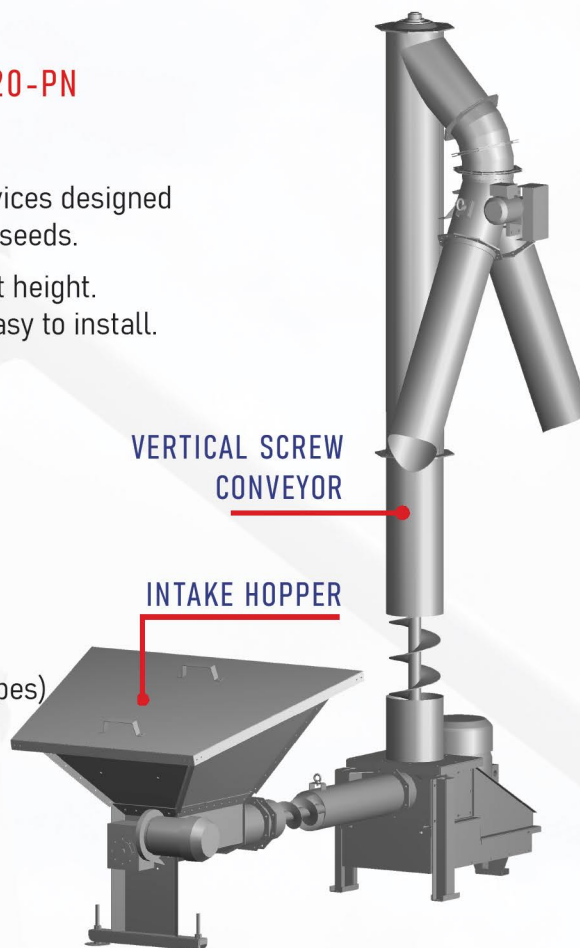
INTAKE HOPPER WITH SCREW CONVEYOR

- Intake hopper is dedicated to grain unloading from farm trailers, semitrailers, and open cargo bodies of the trucks.
- It enables the transport of the bulk material to warehouses, silos or other places designed for grain and seed storage.
- Intake hopper consists of body made of galvanized steel. There is located a screw conveyor in the bottom part of the hopper. There is a grate mounted in the top part of the body. There are sides located above the surface of a grate also.
- It is possible to use adjustable cover above the spiral to regulate amount of bulk material received by the hopper.
- Intake hopper may be produced in the following lengths: 5m, 6m, 8m or 9m.



VERTICAL SCREW CONVEYORS TYPE PS220-PN

- Vertical screw conveyors type PS220-PN are stationary devices designed for vertical transporting of the cereal grains, maize, and oilseeds.
- They enable transport of the bulk material to the significant height. Its demand for the built-up area is small, which makes it easy to install.
- They are very useful for loading and unloading grain silos.
- The height of up to 14,6m
- Nominal capacity of 24 t/h
- They are mounted directly to the silo or to the PRS support.
- Their height is sufficient for loading silos of the range from BIN 10 type to BIN100 type using feeling pipes (downpipes) and for loading silos type BIN200 using screw conveyors mounted on the silo catwalks.

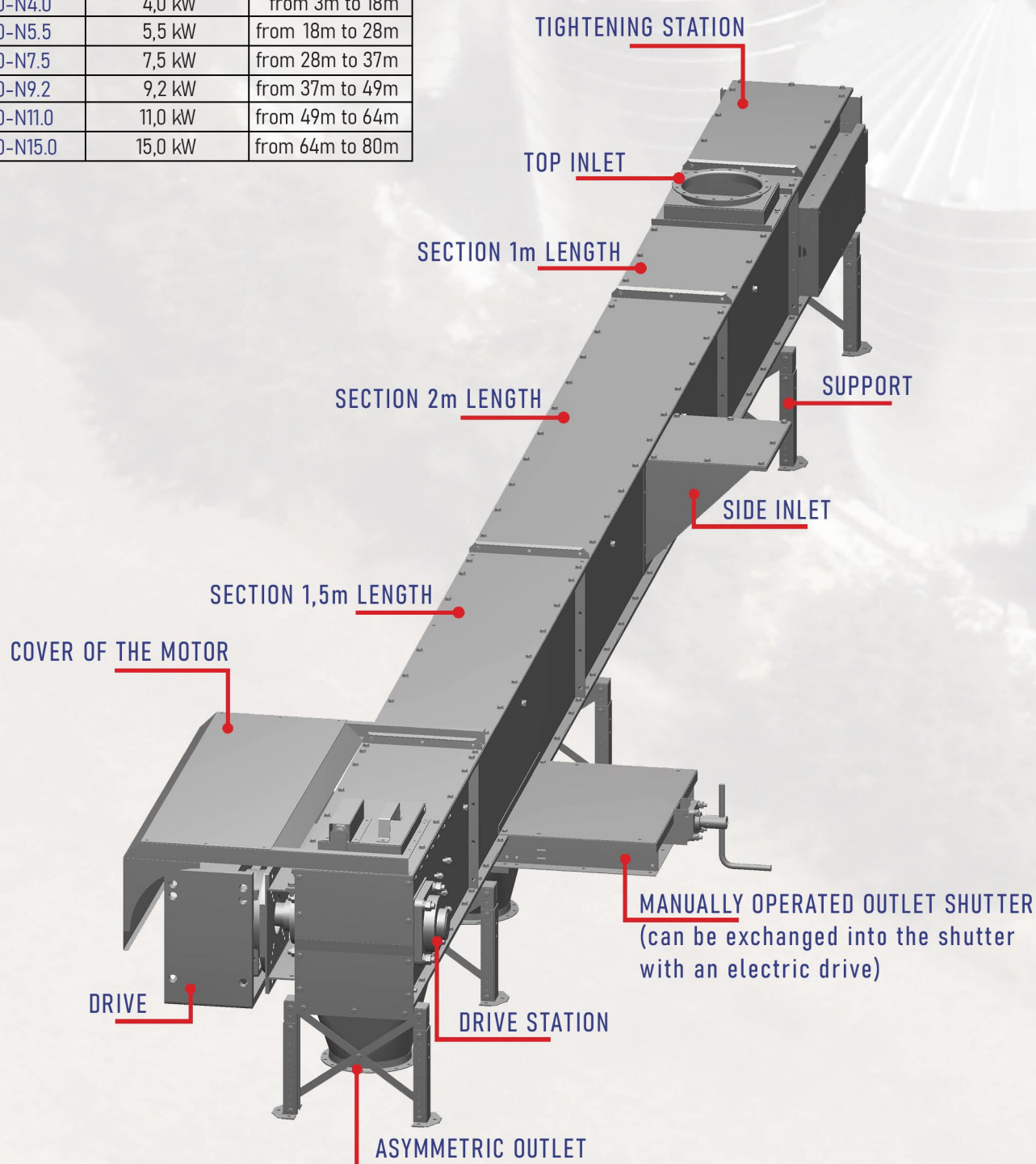




CHAIN CONVEYORS **MODEL RED250**

- Chain conveyors are designed for transporting cereal grain, maize, and oilseeds.
- Transport can take place horizontally or at an angle of up to 30°.
- Chain conveyors offered in the total length from 3m to 80m (extension every 0,5m) are designed to work with a nominal capacity of 45 t/h.
- The performance of the device depends, among others, on the type of grain being transported, moisture of bulk material, grain contamination level, inclination angle of the conveyor and the filling level of the conveyor body.
- The drives are equipped with helical-bevel gearboxes.

drive code	power	total length
RED250-N3.0	3,0 kW	from 3m to 16m
RED250-N4.0	4,0 kW	from 3m to 18m
RED250-N5.5	5,5 kW	from 18m to 28m
RED250-N7.5	7,5 kW	from 28m to 37m
RED250-N9.2	9,2 kW	from 37m to 49m
RED250-N11.0	11,0 kW	from 49m to 64m
RED250-N15.0	15,0 kW	from 64m to 80m



BIN BASIC COMPONENTS OF RED250 CHAIN CONVEYOR:

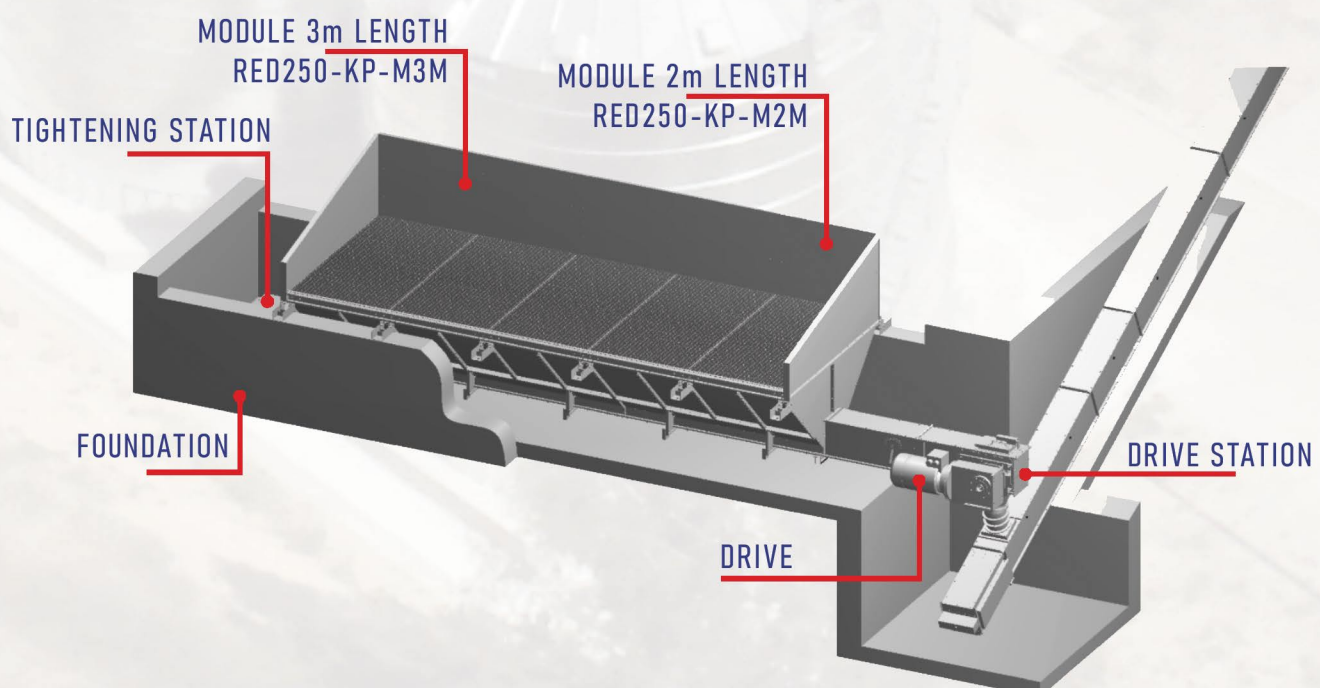
- drive station with helical-bevel gearbox (reducer) and motor with the power of from 3kW to 15kW depending on the conveyor length
- tightening station with chain tensioning springs
- segments of the conveyor with the following length: 1m, 1,5m or 2m
- chain with scrapers

BIN ADDITIONAL COMPONENTS OF RED250 CHAIN CONVEYOR:

- top inlet and side inlet
- asymmetric outlet
- outlet with manually or electrically operated shutter
- height adjustable supports of the conveyor: lower support with the height from 2cm to 9,5cm and higher support with the height from 30cm to 44,6cm
- angular support of the conveyor with height-adjusting (from 30cm to 112,8cm) and the slop adjusting (to 30°) designed for supporting inclined conveyors
- cover of the motor protecting the drive from atmospheric precipitation

BIN INTAKE HOPPER WITH CHAIN CONVEYOR

- Intake hopper is dedicated to the unloading of grains, maize, and oilseeds from farm trailers, semitrailers, and open cargo bodies of the trucks.
- Intake hopper consists of the body made of galvanised steel and the grate made of "WEMA" bridging grilles.
- There is a chain conveyor located in the bottom part of the hopper. It is possible to connect screw conveyor, other chain conveyor or bucket elevator to this chain conveyor.
- The lever installed in the section of the chain conveyor helps to control the amount of received bulk material.
- Intake hopper may be available in **overrun** or **non-overrun** version.
- Intake hopper may be produced in lengths from 3m to 12m. Length adjustment every meter.





BUCKET ELEVATORS

Bucket elevators are dedicated to vertical transportation of cereal grains, maize, and oilseeds to the maximum height of 34,2 m with nominal capacity of up to 120 t/h.

Elevator is equipped with a reducer and a motor with brake. The brake can be unblocked by hand.

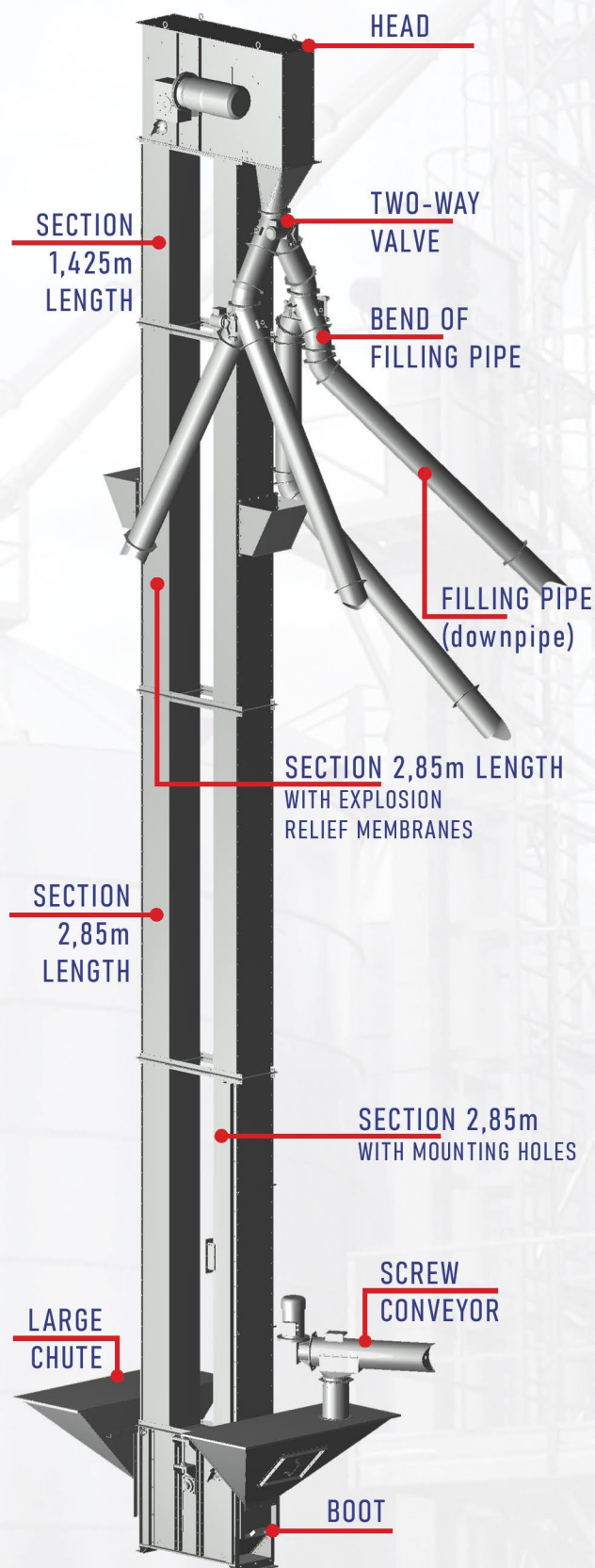
One chute or two chutes can be mounted to the boot of chain conveyor. BIN company offers 3 sizes of the chutes:

- small chute for one pipe or conveyor,
- special chute for two pipes or conveyors,
- large chute for several pipes or conveyors.

The bucket elevator must be attached to some structural elements ensuring its stability.

model of the bucket elevator	height of the transmission	motor power for the capacities	
		45 t/h	60 t/h
PK250-4.3	4,28 m	3,0 kW	3,0 kW
PK250-5.7	5,70 m	3,0 kW	3,0 kW
PK250-7.1	7,13 m	3,0 kW	4,0 kW
PK250-8.6	8,55 m	5,5 kW	4,0 kW
PK250-10.0	9,98 m	5,5 kW	5,5 kW
PK250-11.4	11,40 m	5,5 kW	5,5 kW
PK250-12.8	12,83 m	5,5 kW	5,5 kW
PK250-14.3	14,25 m	5,5 kW	5,5 kW
PK250-15.7	15,68 m	5,5 kW	7,5 kW
PK250-17.1	17,10 m	5,5 kW	7,5 kW
PK250-18.6	18,53 m	5,5 kW	7,5 kW
PK250-20.0	19,95 m	5,5 kW	7,5 kW
PK250-21.4	21,38 m	7,5 kW	9,2 kW
PK250-22.8	22,80 m	7,5 kW	9,2 kW
PK250-24.2	24,23 m	7,5 kW	9,2 kW
PK250-25.6	25,65 m	7,5 kW	9,2 kW
PK250-27.1	27,08 m	11,0 kW	11,0 kW
PK250-28.5	28,50 m	11,0 kW	11,0 kW
PK250-29.9	29,93 m	11,0 kW	11,0 kW

model of the bucket elevator	height of the transmission	motor power for the capacities	
		100 t/h	120 t/h
PK290-3.3	3,33 m	3,0 kW	3,0 kW
PK290-4.7	4,75 m	3,0 kW	4,0 kW
PK290-5.7	5,70 m	4,0 kW	4,0 kW
PK290-7.1	7,13 m	4,0 kW	5,5 kW
PK290-8.6	8,55 m	5,5 kW	5,5 kW
PK290-10.0	9,98 m	5,5 kW	7,5 kW
PK290-11.4	11,40 m	7,5 kW	7,5 kW
PK290-12.8	12,83 m	7,5 kW	9,2 kW
PK290-14.3	14,25 m	7,5 kW	9,2 kW
PK290-15.7	15,68 m	7,5 kW	9,2 kW
PK290-17.1	17,10 m	9,2 kW	11,0 kW
PK290-18.6	18,53 m	9,2 kW	11,0 kW
PK290-20.0	19,95 m	9,2 kW	15,0 kW
PK290-21.4	21,38 m	11,0 kW	15,0 kW
PK290-22.8	22,80 m	11,0 kW	15,0 kW
PK290-24.2	24,23 m	11,0 kW	15,0 kW
PK290-25.6	25,65 m	15,0 kW	15,0 kW
PK290-27.1	27,08 m	15,0 kW	15,0 kW
PK290-28.5	28,50 m	15,0 kW	18,5 kW
PK290-29.9	29,93 m	15,0 kW	18,5 kW
PK290-31.4	31,35 m	15,0 kW	18,5 kW
PK290-32.8	32,78 m	15,0 kW	18,5 kW
PK290-34.2	34,20 m	18,5 kW	18,5 kW

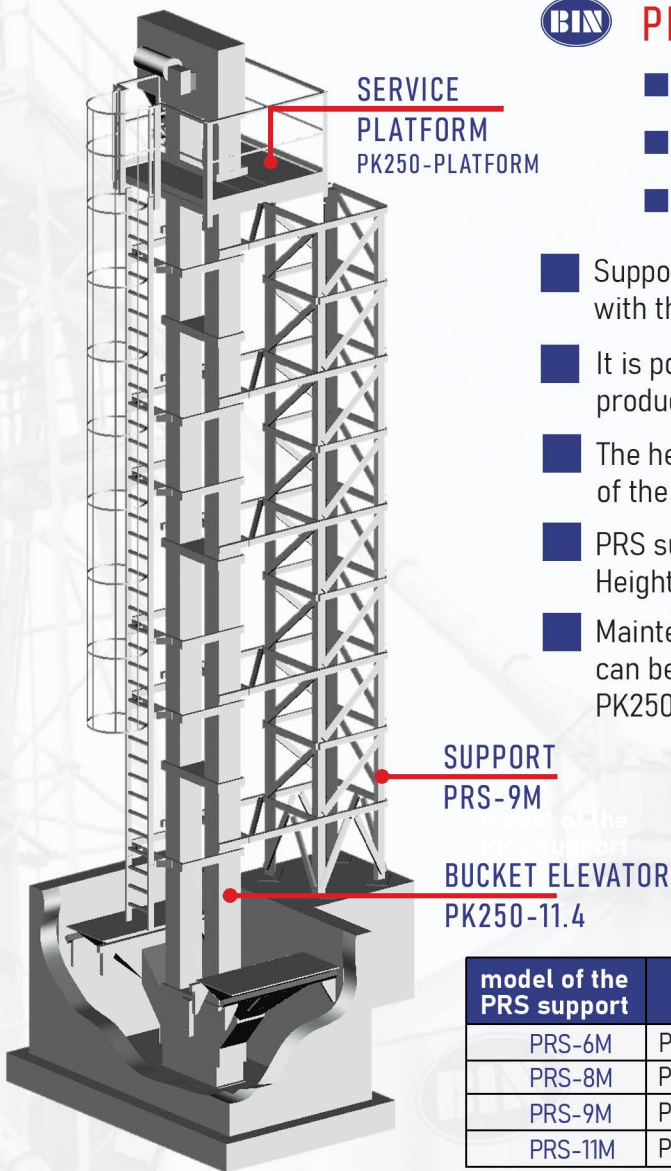




PRS SUPPORT

- to the bucket elevator
- to the downpipe
- to the vertical screw conveyor

- Support of the bucket elevator consists of PRS multifunctional support with the appropriate number of conveyor fasteners.
- It is possible to use PRS support to bucket elevators produced by the company BIN with a height of up to 12,8m.
- The height of the PRS support is adjusted to the height of the bucket elevator or vertical screw conveyor.
- PRS support may be produced in heights from 6m to 11m. Height adjustment every meter.
- Maintenance of the bucket elevator fixed to the support can be provided by the maintenance platform model PK250-PLATFORM. The platform is equipped with the ladder.



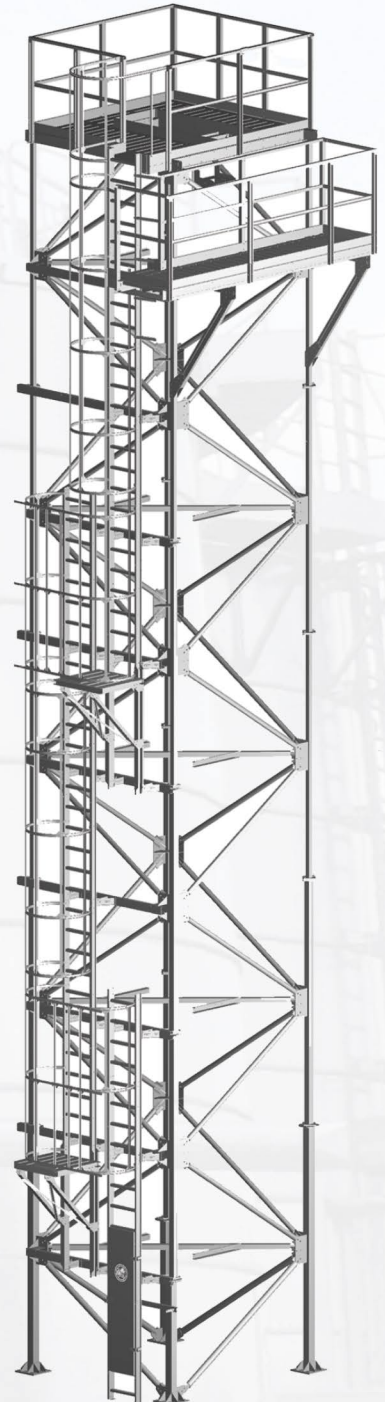
model of the PRS support	model of the bucket elevator	
PRS-6M	PK250-8.6	PK290-8.6
PRS-8M	PK250-10.0	PK290-10.0
PRS-9M	PK250-11.4	PK290-11.4
PRS-11M	PK250-12.8	PK290-12.8



TOWER OF THE BUCKET ELEVATOR

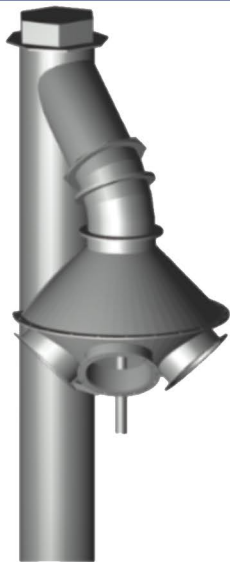
- The tower is used to support a bucket elevator.
- The tower is equipped with two platforms and the ladder with the safety cage. The top platform enables maintenance of the bucket elevator head. The bottom platform allows access to the valves and filling pipes.
- The heights of the towers are adjusted to the heights of standard bucket elevators manufactured by the BIN company.

model of the tower	total height of the tower	model of the bucket elevator	
WPK-1-12.8	14,1 m	PK250-14.3	PK290-14.3
WPK-1-14.3	15,5 m	PK250-15.7	PK290-15.7
WPK-1-15.7	16,9 m	PK250-17.1	PK290-17.1
WPK-1-17.1	18,3 m	PK250-18.6	PK290-18.6
WPK-1-18.5	19,8 m	PK250-20.0	PK290-20.0
WPK-1-20.0	21,2 m	PK250-21.4	PK290-21.4
WPK-1-21.4	22,6 m	PK250-22.8	PK290-22.8
WPK-1-22.8	24,0 m	PK250-24.2	PK290-24.2
WPK-1-24.2	25,4 m	PK250-25.6	PK290-25.6
WPK-1-25.6	26,9 m	PK250-27.1	PK290-27.1
WPK-1-27.1	28,3 m	PK250-28.5	PK290-28.5
WPK-1-28.5	29,7 m	PK250-29.9	PK290-29.9



ACCESSORIES TO BUCKET ELEVATORS

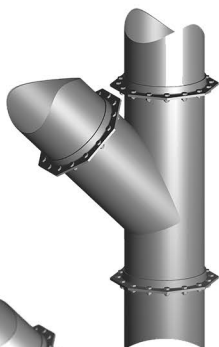
BIN FOUR-WAY OR SIX-WAY
VALVE Ø200



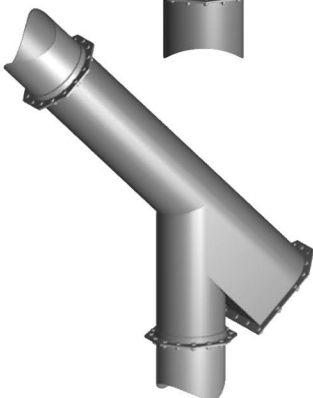
BIN TWO-WAY VALVE FOR
Ø200 OR Ø300



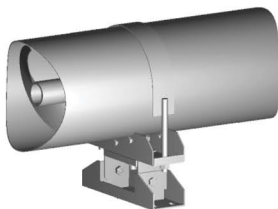
BIN COLLECTOR FOR
FILLING PIPES
Ø200 OR Ø300



BIN BRAKE FOR
FILLING PIPES
Ø200 OR Ø300



BIN FITTING FOR PIPES
AND SCREW CONVEYORS
Ø160, Ø220 OR Ø300

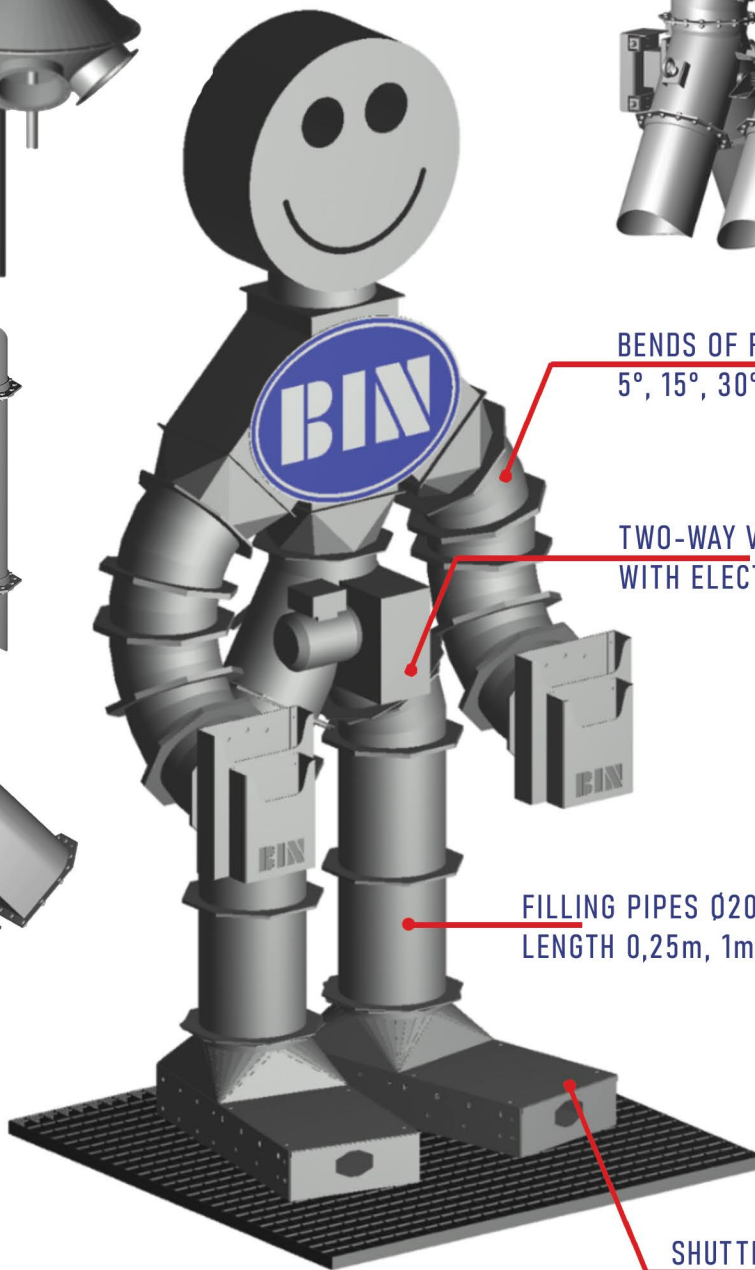


BENDS OF FILLING PIPES Ø200:
5°, 15°, 30°

TWO-WAY VALVE Ø200
WITH ELECTRIC DRIVE

FILLING PIPES Ø200,
LENGTH 0,25m, 1m, 1,5m and 2m

SHUTTER TO THE SILOS
WITH CONE-BOTTOM



BIN Sp. z o.o.

ul. Narutowicza 12
87-700 Aleksandrów Kujawski
POLAND

EXPORT DEPARTMENT



+48 54 282 88 05



export@bin.agro.pl

FULL LIST OF DISTRIBUTORS AVAILABLE ON THE WEBSITE:



www.bin.agro.pl